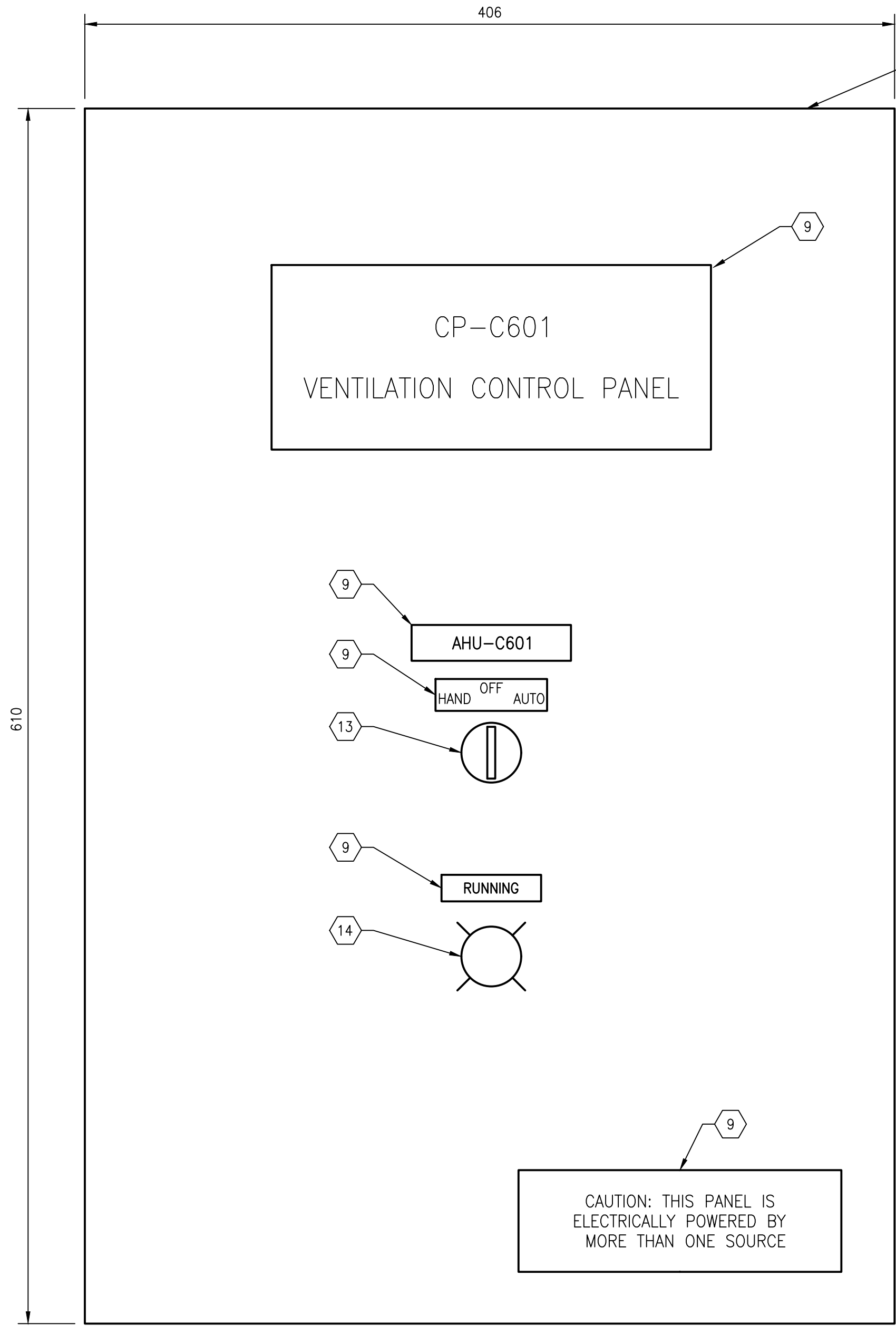
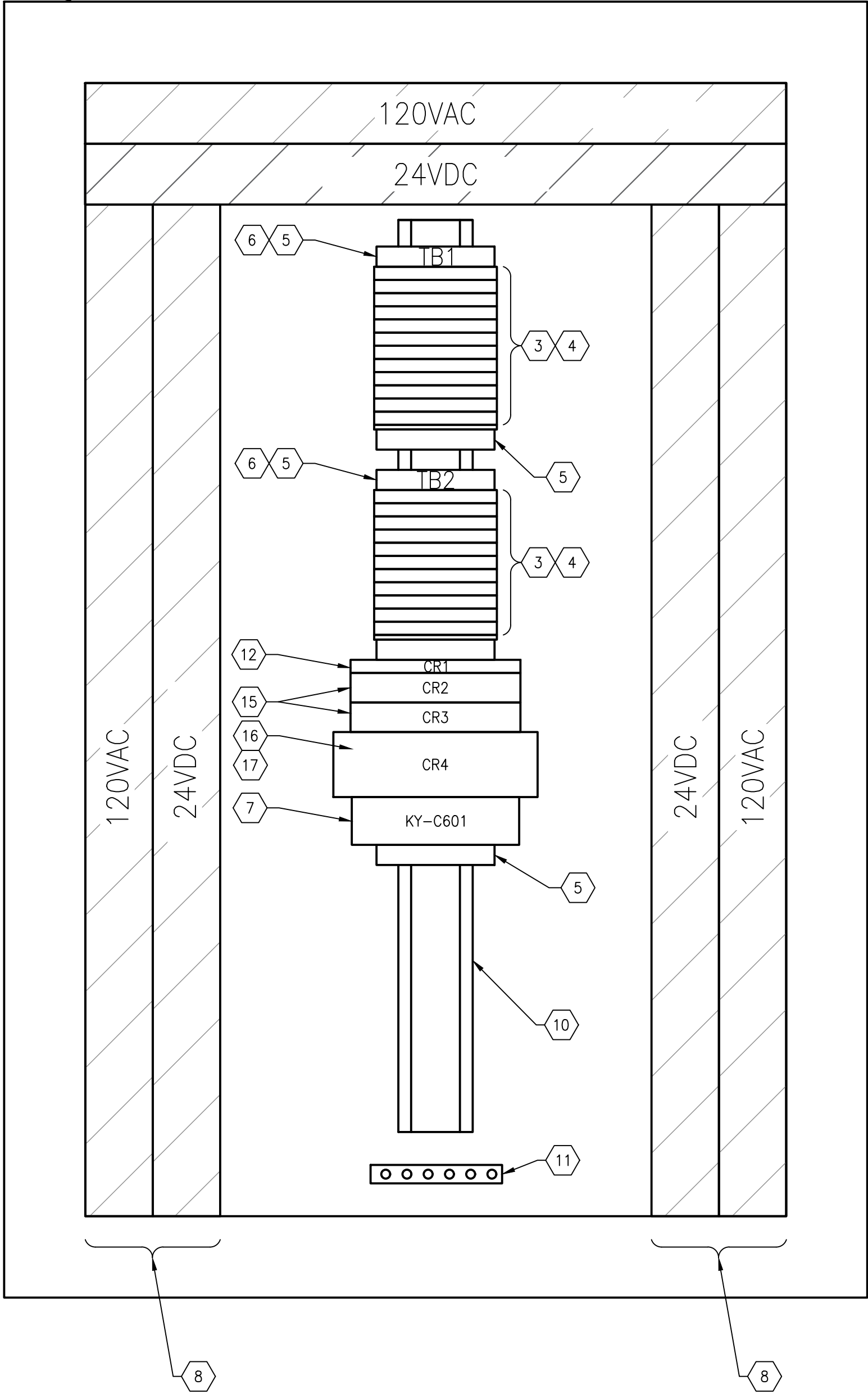


A1 SIZE – 594mm x 841mm



EXTERIOR PANEL VIEW
1 : 2



INTERIOR PANEL VIEW
1 : 2



CP-C601 BILL OF MATERIAL				
ITEM	QTY	DESCRIPTION	MANUFACTURER	CATALOG NUMBER
1	1	NEMA 4X RATED ENCLOSURE, STAINLESS STEEL WALLMOUNT HINGED – 610x406x203	HOFFMAN	A24H160BSSLP
2	1	BACK PANEL FOR ITEM 1 – SUPPLIED BY VENDOR	HOFFMAN	A24P16G
3	AS REQ'D	FEED-THROUGH TERMINAL – UK 16	PHOENIX CONTACT	3046184
4	2	TERMINAL END PLATE – D-UT 2,5/4 TWIN	PHOENIX CONTACT	3047141
5	5	TERMINAL END CLAMP – CLIPFIX 35	PHOENIX CONTACT	3022218
6	2	TERMINAL BLOCK MARKER – KLM-A	PHOENIX CONTACT	1004348
7	1	MULTI-FUNCTION HIGH PERFORMANCE TIMING RELAY	ALLEN BRADLEY	700-FSH3VU23
8	AS REQ'D	NARROW SLOT WIRING DUCT AND COVER, 1.25"x3.12"	PANDUIT	F1X3LG6
9	5	IDENTIFIER LAMACOIDS	–	–
10	AS REQ'D	35mm DIN RAIL	PHOENIX CONTACT	0801733
11	1	GROUND BAR, 6 TAPS	ILSCO	D167-6
12	1	SPDT CONTROL RELAY, 24VDC INPUT	PHOENIX CONTACT	2966171
13	1	SELECTOR SWITCH, 3-POSITION, MAINTAINED, 1 N/O, 1 N/C	SCHNEIDER ELECTRIC	9001SKS43BH13
14	1	30mm PUSH BUTTON, TYPE SK, PILOT LIGHT, 120VAC, RED PLASTIC, NEMA 4X	SCHNEIDER ELECTRIC	9001SKP38R31
15	2	2PDT CONTROL RELAY, 120VAC INPUT	PHOENIX CONTACT	2967086
16	1	RELAY, 120 VAC, 4PDT, LED, 6A	PHOENIX CONTACT	2903687
17	1	RELAY, BASE, 4PDT	PHOENIX CONTACT	2900934

GENERAL NOTES:

- ALL POWER AND 120VAC WIRING IS TO BE TEW/MTW 300V, 105°C INSULATION, STRANDED COPPER, 12 AWG OR LARGER WHERE CURRENT REQUIREMENTS DICTATE AS PER CEC REQUIREMENTS.
- ALL 24 VDC CONTROL WIRING IS TO BE TEW/MTW 300V, 105°C INSULATION, STRANDED COPPER, 16 AWG.
- COMPONENTS ARE TO BE LABELLED AS SHOWN ON THE DRAWINGS.
- TEST ALL WIRING AND COMPONENTS FOR FUNCTIONAL OPERATION, CORRECT CONNECTION, CONTINUITY AND INSULATION INTEGRITY. DOCUMENT ALL TEST RESULTS.
- ALL MAJOR COMPONENTS INSIDE THE PANEL ARE TO BE LABELLED WITH LAMACOIDS IN ACCORDANCE WITH MAJOR DESCRIPTIONS ON THE DRAWINGS.
- ALL TERMINAL BLOCKS ARE TO BE NUMBERED AS SHOWN IN THE DRAWINGS, COMPLETE WITH GROUP LABELLING.
- ALL WIRES SHALL BE MARKED AS INDICATED ON THE DRAWINGS.
- PANEL TO BE NEMA 4X COMPLAINT, INCLUDING ALL COMPONENTS THE FRONT OF THE PANEL.

1-0630M-E0077	CONNECTION DIAGRAM, MAKE-UP AIR UNIT AHU-C601
1-0630M-E0073	ELECTRICAL EQUIPMENT PLAN, CHLORINE BUILDING
DRAWING NUMBER	REFERENCE DRAWINGS



					 148 Nature Park Way, Winnipeg, Manitoba Canada R3P 0X7 204-786-8080					ENGINEER'S SEAL					 THE CITY OF WINNIPEG WATER AND WASTE DEPARTMENT				
					DESIGNED BY: B. WILKS					CHECKED BY: V. ELIMBAN					MACLEAN PUMPING STATION CHLORINE SYSTEM UPGRADES PANEL LAYOUT VENTILATION CONTROL PANEL CP-C601				
					DRAWN BY: B. WILKS					APPROVED BY: V. ELIMBAN									
					SCALE: AS SHOWN					ISSUED FOR CONSTRUCTION BY: M. SKINNER									
					DATE: 2023/08/21					DATE: 2025/04/30									
00 ISSUED FOR TENDER AND CONSTRUCTION					2025/04/30					VE					VE				
NO. REVISIONS					DATE					DESIGN					CHECK				
															CITY DRAWING NUMBER 1-0630M-A0071				
															SHEET 001				
															REV. 00				
															SIZE A1				